



## Communication and Collaboration

An important part of any learning experience is the ability to share thoughts and ideas, and to ask and answer questions. In SANSspace, teachers or administrators may post announcements for students to give instruction for assignments, or to broadcast information on upcoming events, for example. These announcements can take the form of a text message or voice message and may include an attached file or link. Upon logging in to the SANSspace learning space, students readily see any new announcements that pertain to them.

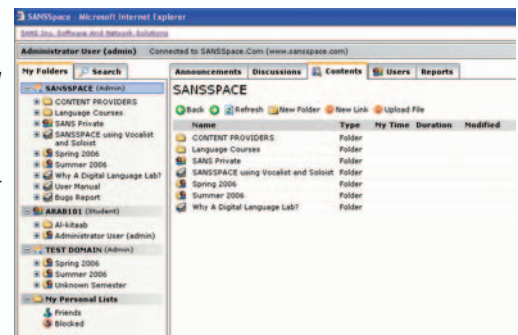
Forums provide an asynchronous communication vehicle to exchange ideas. This feature can be monitored and controlled by a teacher or administrator as necessary. The Chat room adds synchronous communication, allowing all connected users to either text chat or voice chat as a group.

## A Virtual Learning Environment

### A Flexible Learning Space

In today's world, learning takes places 24/7. The SANSspace virtual learning environment is a learning space where students and teachers can work independently or collaboratively anyplace, anytime via an intranet or internet portal.

The SANSspace toolset makes it easy to deliver and manage course materials, including audio and video resources, and to segment what is available to each user. Students can work at their own pace to complete assignments or explore available resources. Teachers may view each student's progress including time spent and activity within a specific content area, review each student's work, and collaborate in writing or verbally with the student.

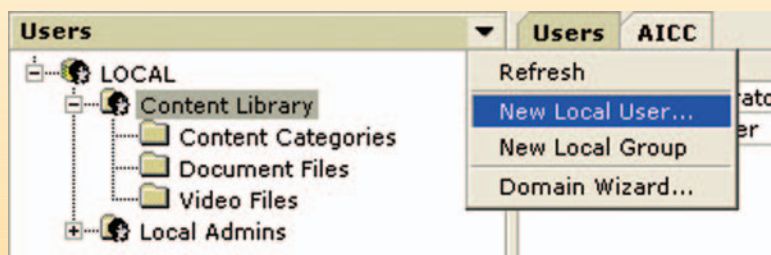


For language learners in particular, a key element in SANSspace to develop listening and speaking skills, is the SANSspace "Digital Audio Comparative Recorder" which enables students to listen to a stimulus, record their responses, save, and review both simultaneously for comparison. Additionally, the recorder includes a bookmark function which enables teachers and students to mark significant points in an audio/video file for review.

### Defining Your Learning Community

Your community of users may include a variety of individuals including teachers, students, and administrators. This learning community can be setup as a hierarchy that aligns with your organizational structure. For example, you may want some people to have administrative rights and others only access to content.

User information for the SANSspace application can be synchronized with an existing database management program that you may be using to organize and classify your community campus wide. Users can also be manually added as an option.





## User Activity and Assessment

Every time anyone in the designated learning community signs into SANSspace their information is recorded. The utility captures who, what, when, from and how long the individual was logged in.

With a focus on review and assessment, SANSspace tracks student activity to a granular level allowing teachers to review exactly what interactivity a student has had with any given material. This is important in assessing students' progress and determining if students are having difficulty with any particular assignments or concepts.

If a student begins an assignment but does not complete it during that session, SANSspace enables them to return to that content and continue where they left off in a subsequent session. This makes it easy for students to work on assignments and provides them with a level of efficiency to keep them on task.

At any time, instructors can view students' work and see both complete and incomplete assignments and time on each individual task.

The system generates usage reports providing the administration with a complete picture of the learning community's utilization of the available resources.

## For More Information

For more information on our full line of educational technology products and learning systems or to locate a SANS Sales Representative in your area, e-mail us at [sales@sansinc.com](mailto:sales@sansinc.com), call us at 203-315-5529, or visit our website at [www.sansinc.com](http://www.sansinc.com).

## Integration and Instructional Control

SANSspace is easily integrated into an instructional classroom with the Sony Virtuoso™/Soloist® Language Learning Suite. Once logged on to SANSspace, students may access audio/video course materials that have been assigned to them, and SANSspace will launch the Soloist Digital Comparative Recorder. As the student works with the launched file, SANSspace records their time on task. Additionally, in this setting, using the Virtuoso Instructional Control Software, the teacher has full control. They can view real-time screen shots of each student's monitor; blank student screens; and even disable all windows except for the assigned task to keep students focused.

## Efficiently Delivering Audio and Video

SANSspace provides a complete solution for multimedia streaming on an intranet or the Internet with support for standard file formats including .mpg, .avi, .wmv, .asf, .mp3, and .wav files.

## Technical Requirements

SANSspace runs on the Microsoft Windows® platform. Please contact SANS directly for additional technical specifications.



Exclusive Licensor of Sony Language Learning Software

10 White Wood Lane  
North Branford, CT 06471

