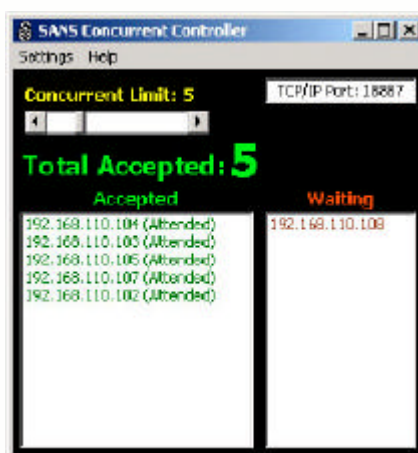




# SOLOIST™

Digital PC Comparative Recorder

## CONCURRENT CONTROLLER



The Concurrent Controller software has one screen shown below. When the software is started, the "Concurrent Limit" is the number of licenses purchased. As students start the Soloist® software (and it establishes a TCP/IP connection with the PC running the Concurrent Controller software), the IP Address of the student PCs appear in the "Accepted" list. If additional copies of Soloist® are started, beyond the Connection limit, their PC IP Address appears in the "Waiting" list (in the order they were started).

The Concurrent Controller License Management software is used to automatically control the licenses for "unregistered" copies of the Soloist® Digital PC Comparative Recorder software. This allows you to install Soloist® on as many PCs in your network as you want, while the Concurrent Controller enables full functionality of Soloist® up to the number of concurrent licenses purchased.

As an example, if you purchase the Concurrent Controller software with a 25 license limit, you could install Soloist® on as many PCs as desired - maybe 25 in the "lab", a few in the library, and more in other locations - only the first 25 copies of Soloist® started will be "Accepted" and have full functionality. If other copies of Soloist® are started, they will operate in "demo" mode, with the main limitation of being unable to record.

Any copies of Soloist® started beyond the license limit will be placed in the "Waiting" queue in the order they were started. When "Accepted", copies of Soloist® software are shutdown, those in the "Waiting" queue will automatically be "Accepted" (allowing full functionality based on the order they were started).

### Virtuoso? Instructional Control Software

If you have the Virtuoso™ Instructional Control Software, students wanting to "Attend" a class take priority over those using the Soloist software for self-study.

Continuing the example (25 licenses), if 5 students are using Soloist® outside the lab (and are "Accepted"), once a lab session starts, and the 21st student "attends" to Virtuoso™, the last Soloist® accepted that is not attended is moved to the "Waiting" queue, disabling that students ability to record (the student is prompted of such and can save any recordings they may have started).



**BRATTON**  
corporation

1105 Dublin Road Columbus, Ohio 43215  
1-888-SONY LAB www.brattonlabs.com